

LINDEN GOLF & COUNTRY CLUB
CORDIALLY INVITES YOU TO PARTICIPATE IN THE

2ND ANNUAL
WOMEN'S INVITATIONAL GOLF TOURNAMENT

LINDEN GOLF & COUNTRY CLUB
SEE WEBSITE FOR DIRECTIONS: WWW.LINDENGOLF.COM

SATURDAY - JUNE 23, 2012
1:30 PM SHOT GUN START

FORMAT

FOUR (4) PERSON TEAM
BEST 2 OF 4 OF THE FOURSOME
(FOUR (4) PERSON TEAM WITH TWO (2) BEST BALLS COUNTING AS THE TEAM SCORE)
LIMITED FIELD - 64 PLAYERS MAX

DIVISIONS

THREE (3) DIVISIONS
(TO BE DETERMINED UPON # OF ENTRIES)
(PLAYERS MUST HAVE A CURRENT GHIN NUMBER—MAX INDEX OF 40.0)

PRIZE PAYOUT

1ST PLACE LOW GROSS
1ST PLACE LOW NET
1ST & 2ND PLACE FOR LOW NET - DIVISION 1
1ST & 2ND PLACE FOR LOW NET - DIVISION 2
1ST & 2ND PLACE FOR LOW NET - DIVISION 3
(ALL PRIZES WILL BE CASH. PAYOUTS DETERMINED UPON NUMBER OF PARTICIPANTS)

COST

\$50.00 PER PERSON/ \$200.00 PER TEAM
TEAM KP's - \$20.00 PER TEAM

INCLUDES DINNER AND AWARDS PRESENTATION AFTER THE TOURNAMENT
GOLF CART NOT INCLUDED. CARTS ARE AVAILABLE FOR \$15/PP. CONTACT WILL STYLER (HEAD PRO) TO RESERVE A CART.

ENTRY DEADLINE

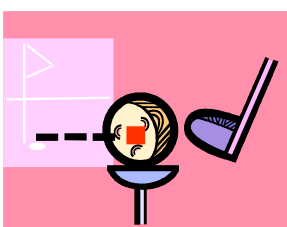
ALL ENTRIES MUST BE RECEIVED BY LINDEN GOLF CLUB BY 5:00 PM ON JUNE 16, 2012.
MAKE CHECKS PAYABLE TO LINDEN GOLF & COUNTRY CLUB

TOURNAMENT SCHEDULE

12:30 PM - TOURNAMENT CHECK-IN
1:10 PM - WELCOME AND RULES REVIEW
1:30 PM - SHOT GUN START
7:00 PM - DINNER & AWARDS

APPROPRIATE COUNTRY CLUB DRESS ATTIRE FOR WOMEN IS REQUIRED.

FOR QUESTIONS AND OR ADDITIONAL INFORMATION PLEASE CONTACT
TOURNAMENT CHAIR, DEBBIE SEELYE @ 253-208-1137 OR THE PRO SHOP @ 253-845-2056



Linden Golf & Country Club | 2519 E Main Ave | Puyallup, WA 98372 | Phone: (253)845-2056
Visit us on the web: www.lindengolf.com

